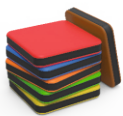


## Materiali di qualità Quality materials

Tutti i nostri prodotti sono costruiti utilizzando materiali resistenti e di alta qualità, provenienti da fornitori selezionati. Questo ci consente di ottenere un risultato che non solo è visivamente gradevole e funzionale, ma anche sicuro e in linea con le normative attuali.

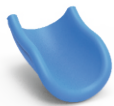
*All our products are built using durable, high-quality materials sourced from selected suppliers. This allows us to obtain a final result that is not only visually pleasing and functional, but also safe and in line with current regulations.*



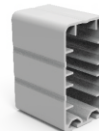
**Polietilene ad alta densità riciclato (HDPE)**  
Recycled high-density polyethylene (HDPE)



**Profilo ottagonale in alluminio 70 x 70 mm**  
Aluminum octagonal profile 70 x 70 mm



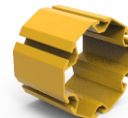
**Polietilene rotazionale (PTE)**  
Rotational polyethylene (PTE)



**Profilo rettangolare in alluminio 130 x 70 mm**  
Aluminum rectangular profile 130 x 70 mm



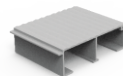
**Acciaio inossidabile AISI304**  
Stainless steel AISI304



**Profilo esagonale in alluminio 120 x 120 mm**  
Aluminum hexagonal profile 120 x 120 mm



**Legno di pino impregnato**  
Impregnated pine wood



**Profilo pavimento in alluminio**  
Aluminum floor profile



**Corda**  
Armed rope



**Profilo in alluminio 40 x 30 mm**  
Aluminum profile 40 x 30 mm



**Profilo quadrato in alluminio 90 x 90 mm**  
Aluminum square profile 90 x 90 mm



**Profilo in alluminio 60 x 30 mm**  
Aluminum profile 60 x 30 mm